



### Who We Are - Why You Should Be Interested

Scantech is an Australian based technology developer and world leader in the application of continuous measurement systems for conveyed bulk materials. Since 1981, Scantech has supplied over 1,200 analysers to customers in 55 countries. The highly successful COALSCAN and GEOSCAN analysers proven in coal, cement, power, alternative fuels, recycling, steel and minerals industries are the mainstay of our product range. Our innovative measurement solutions improve quality and real time process control.

### Our Products - Improving Productivity in Your Plant

Scantech's broad range of high quality industrial instruments has been proven to be:

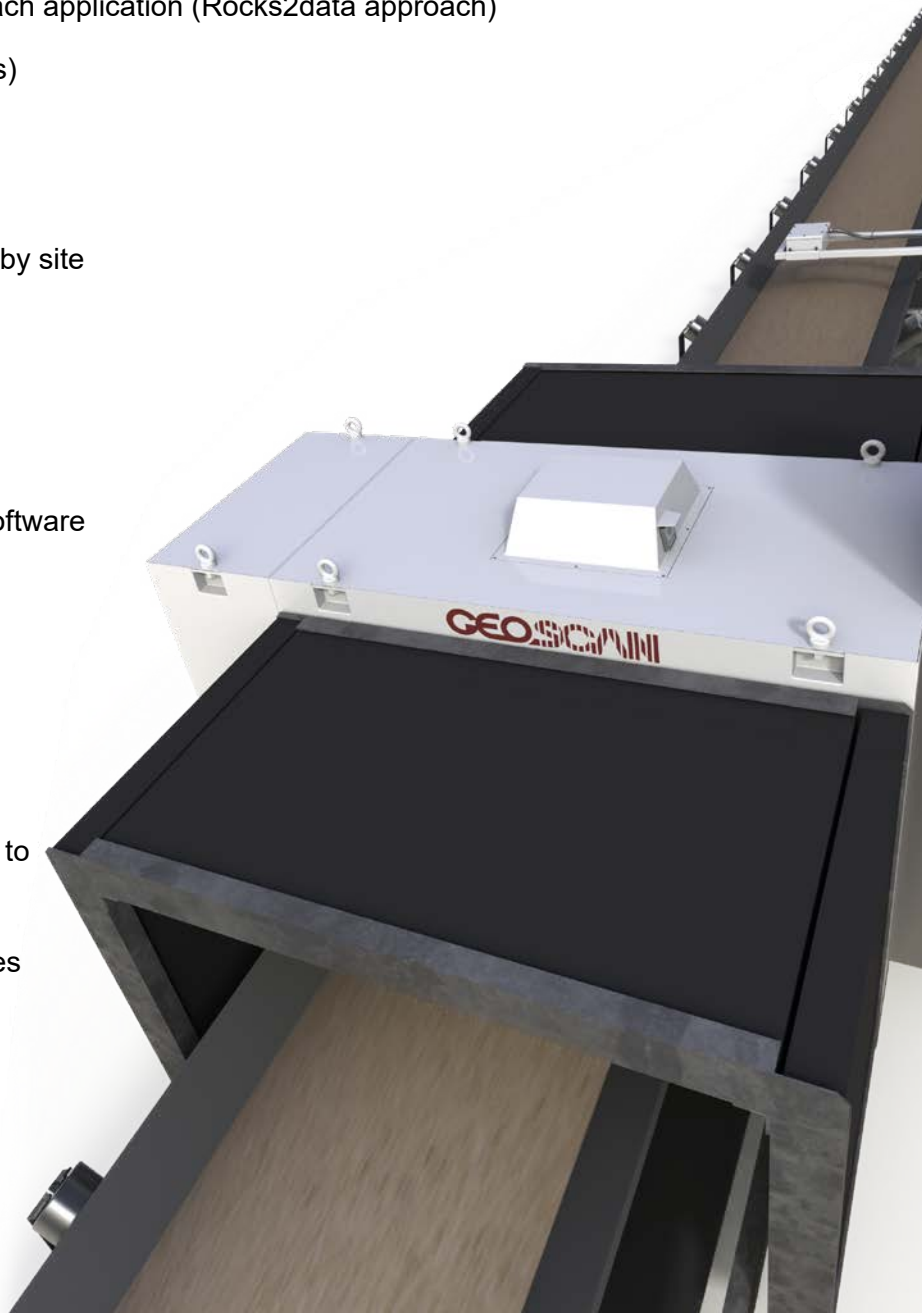
- Safe, robust, reliable and accurate
- Representative by measuring through conveyed material (not surface analysis)
- Flexible to setup to meet data needs of each application (Rocks2data approach)
- Easy to maintain (no contact or wear parts)
- Upgradable in the field
- Accessible remotely
- Transparent – data direct to plant, owned by site

Enhancements include:

- Money-back performance guarantees
- SUPERSCAN display & interface
- BLENDSCAN stockpile & proportioning software
- Customised designs available
- Plant interface options

Major benefits:

- Measure & control quality in real time
- Significant process improvements due to consistent feed quality
- Improved process efficiency and recoveries
- Reduced energy, water, additives
- Multiple concurrent applications of data



# Applications



# Products

## MINERALS INDUSTRY

|  |  |  |
|--|--|--|
| GEOSCAN GOLD and GEOSCAN-M elemental analysers   | <ul style="list-style-type: none"> <li>Premium high specification analyser for fast measurement, demanding applications</li> <li>Suits most ores &amp; concentrates</li> <li>Stockpile management</li> </ul> | <ul style="list-style-type: none"> <li>Blending &amp; bulk sorting</li> <li>Mine feedback, feed forward control</li> </ul>           |
| IRONSCAN and MINERALSCAN 1500 Natural Gamma analysers  | <ul style="list-style-type: none"> <li>Uranium ore, iron ore, potash, etc.</li> <li>Bulk sorting through flow diversion</li> </ul>   | <ul style="list-style-type: none"> <li>Dilution monitoring</li> </ul>  |
| MINERALSCAN 2100   | <ul style="list-style-type: none"> <li>Density measurement e.g. insolubles in potash, trona</li> </ul>   |  |
| TBM Series microwave moisture analysers<br>CM 100 conductive/magnetic material moisture analyser | <ul style="list-style-type: none"> <li>Moisture control for filtration, drying, dust, transport</li> <li>Dry tonnage determination in challenging commodities</li> </ul>                                     |  |
| SizeScan PSD, volume & belt speed analyser   | <ul style="list-style-type: none"> <li>Next generation 3D IR system</li> <li>Grinding mill, HPGR feed monitoring</li> </ul>  | <ul style="list-style-type: none"> <li>Unaffected by dust, no lighting needed</li> <li>Oversize, foreign object detection</li> </ul> |

## CEMENT INDUSTRY

|   |   |  |
|---|---|--|
| GEOSCAN-C elemental analysers           | <ul style="list-style-type: none"> <li>Quarry feedback and control</li> <li>Stockpile building</li> </ul>                         | <ul style="list-style-type: none"> <li>Limestone sorting &amp; blending</li> <li>Kiln fuel optimisation</li> </ul> |
| BLENDSCAN PILE and MILL software        | <ul style="list-style-type: none"> <li>Proportioning software for building stockpiles and Raw mix proportioning</li> </ul>        |  |
| TBM Series microwave moisture analysers | <ul style="list-style-type: none"> <li>Moisture control in concrete batches, in alternative fuel bales and bulky bags</li> </ul>  |  |
| BALZSCAN 9500X elemental analyser       | <ul style="list-style-type: none"> <li>Kiln alternative fuel Calorific Value and Sulphur / Chlorine content monitoring</li> </ul> |  |
| BALZSCAN 2100 Duet analyser             | <ul style="list-style-type: none"> <li>Kiln alternative fuel Calorific Value monitoring</li> </ul>                                |  |

## COAL AND ALTERNATIVE FUELS INDUSTRIES

|   |  |  |
|---|--|--|
| COALSCAN 1500 Natural Gamma analyser            | <ul style="list-style-type: none"> <li>Bulk sorting and plant bypass</li> </ul>  |  |
| COALSCAN and BALZSCAN 2100 Duet analysers       | <ul style="list-style-type: none"> <li>Wash / prep plant optimisation measuring ash and Calorific Value</li> <li>Load out quality control</li> </ul> |  |
| COALSCAN and BALZSCAN 9500X elemental analysers | <ul style="list-style-type: none"> <li>Automated blending and wash / prep plant optimisation measuring elemental</li> </ul>                          |  |
| TBM Series microwave moisture analysers         | <ul style="list-style-type: none"> <li>Fuels Moisture and dust management</li> </ul>   |  |
| SizeScan PSD volume & belt speed analyser       | <ul style="list-style-type: none"> <li>Next generation 3D IR system</li> <li>Oversize detection</li> </ul>   | <ul style="list-style-type: none"> <li>Unaffected by dust, no lighting needed</li> </ul> |

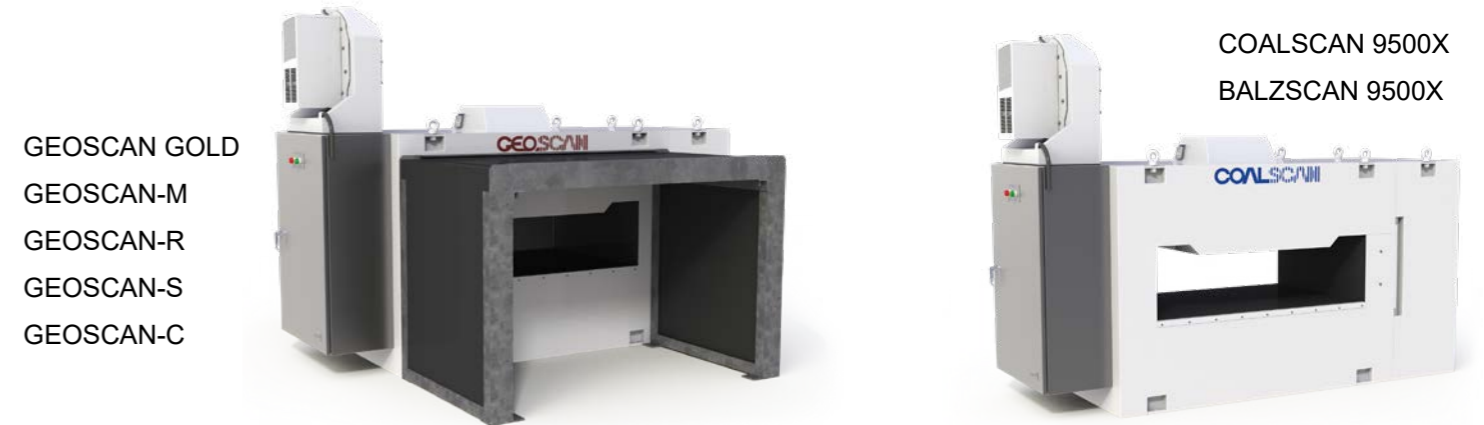
## POWER GENERATION

|   |   |   |
|---|---|---|
| COALSCAN and BALZSCAN 2100 Duet analysers       | <ul style="list-style-type: none"> <li>Measurement of Calorific value of Fuels</li> </ul>   | <ul style="list-style-type: none"> <li>Boiler performance optimisation</li> </ul> |
| COALSCAN and BALZSCAN 9500X elemental analysers | <ul style="list-style-type: none"> <li>Automated blending and wash / prep plant optimisation measuring elemental</li> <li>Bunker feed monitoring &amp; control</li> <li>Alternative Fuel quality control</li> </ul> |   |
| TBM Series microwave moisture analysers         | <ul style="list-style-type: none"> <li>Fuels Moisture and dust management</li> </ul>  |   |
| CIFA 350 carbon in fly ash analyser             | <ul style="list-style-type: none"> <li>Unburnt Carbon content in fly ash</li> </ul>   |   |

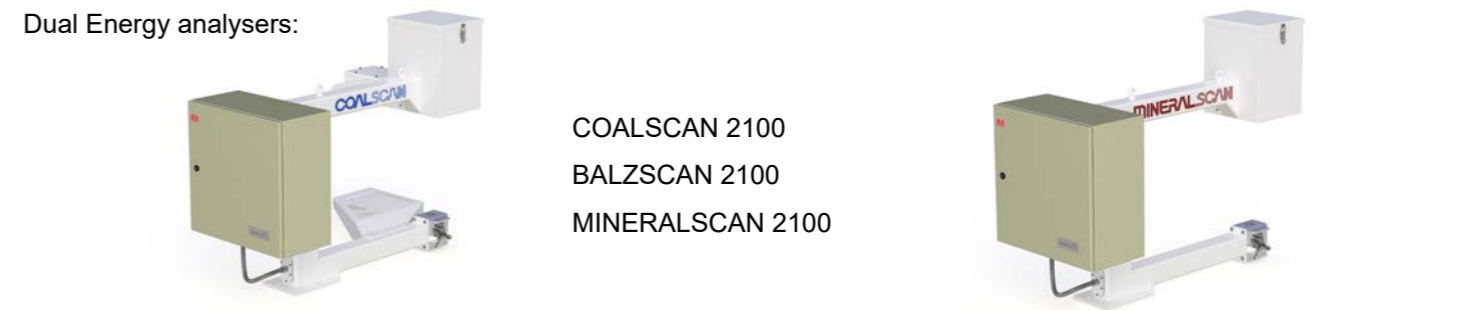
## STEEL & RECYCLING INDUSTRIES

|  |  |  |
|--|--|--|
| COALSCAN 9500X, GEOSCAN-S, GEOSCAN-R elemental analysers | <ul style="list-style-type: none"> <li>Raw material analysis</li> <li>Additive control, e.g. sinter basicity</li> <li>Contaminant detection &amp; control</li> </ul> | <ul style="list-style-type: none"> <li>Bulk sorting and blending</li> <li>Process feed forward control</li> <li>Fuel optimisation</li> </ul> |
| CM 100 moisture analyser for conductive materials        | <ul style="list-style-type: none"> <li>Moisture monitoring of coke &amp; sinter feed for blast furnaces</li> </ul>   |  |
| SizeScan PSD volume & belt speed analyser                | <ul style="list-style-type: none"> <li>Next generation 3D IR system</li> <li>Oversize detection</li> </ul>   | <ul style="list-style-type: none"> <li>Unaffected by dust, no lighting needed</li> </ul>   |

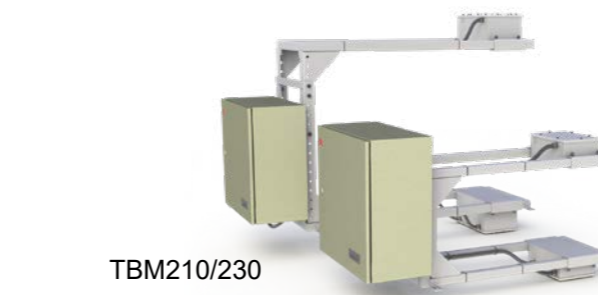
## Elemental analyser models:



## Dual Energy analysers:



## Moisture analysers:



BALESCAN/TBM280

ReadiMoist/TBM260

## Natural gamma analysers:



## PSD/volume/foreign object detection analysers:



## Carbon in fly ash analyser:





## Services – how to benefit from our expertise

We deliver high quality service and analyser support to customers using highly trained and experienced staff. We provide standard sample evaluation, customised calibration and configuration, on site commissioning, calibration and training services, Product Support Agreements and spare parts to optimise analyser benefits. Scantech's Integrated Services can cater for additional analyser-related requirements, from seamless analyser installation to successful integration with plant operations and plant control systems.

### Sample testing

We offer testing of customer samples to ensure calibration and analyser configuration are customised to application:

- Sample size and number specified by analyser
- Measurement performance expectations provided
- Performance guarantees
- 100% success rate in achieving quoted performance
- Eliminates all measurement risk

### Installation

We offer a range of installation services to suit your needs:

- Site inspection visits
- Detailed design
- 3D CAD models
- Structural steel fabrication
- Project management
- On site mechanical installation
- On site electrical and instrumentation installation
- On site installation of ancillary equipment



### Retrofitting

Scantech has developed upgrade kits for all analysers to extend their working life.

- Update analysers to latest specification including: electronics, software and climate control systems
- Improve radiation safety with Automatic Source Drive kit
- Easy retrofitting on site
- Minimal analyser and conveyor downtime

### Analyser Performance Management

On-belt analysis provides plant operators with real-time data which unlocks huge potential for process control. Scantech offers an Analyser Performance Manager to ensure you get the maximum benefit from your analysers.

- Develop Analyser Management Plan to map on-site & off-site activities to achieve desired outcomes
- Report (agreed format) on analyser availability, accuracy, usage and issues to be addressed by whom and by when
- Improve site knowledge and acceptance of Scantech's online analysis technology

### Radiation Services

Health and Safety is paramount in any industry. Our Radiation division offers a range of services relevant to your site. Our services include:

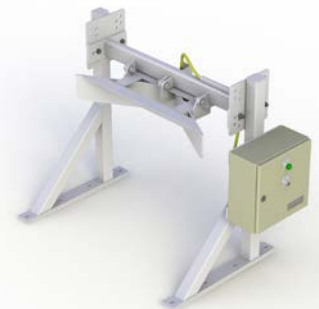
- Radiation surveys
- Radiation Management Plans
- Transport & disposal of radioisotopes
- Source wipe (leakage) tests
- Gauge compliance audits



### Ancillary Equipment

Scantech offers other parts and services for your project.

- Ploughs for oversize protection
- Density gauges
- Belt scales
- Cross-belt samplers
- Metal detectors & separators
- Sample preparation equipment
- Lab equipment



#### ADELAIDE OFFICE

PO Box 64 Unley  
South Australia 5061  
AUSTRALIA  
Tel: +61 8 8350 0200  
Fax: +61 8 8350 0188

Scantech Products have Patented  
Technology & Registered Trademarks

Website: [www.scantech.com.au](http://www.scantech.com.au)

Email: [sales@scantech.com.au](mailto:sales@scantech.com.au)

#### BRISBANE OFFICE

PO Box 1485 Springwood  
Queensland 4127  
AUSTRALIA